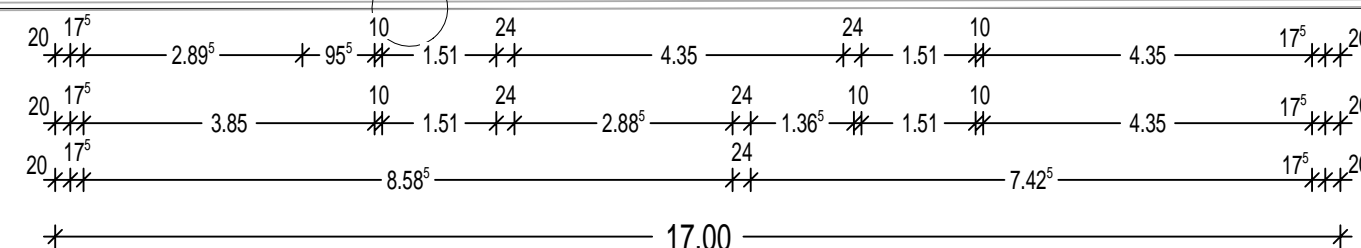
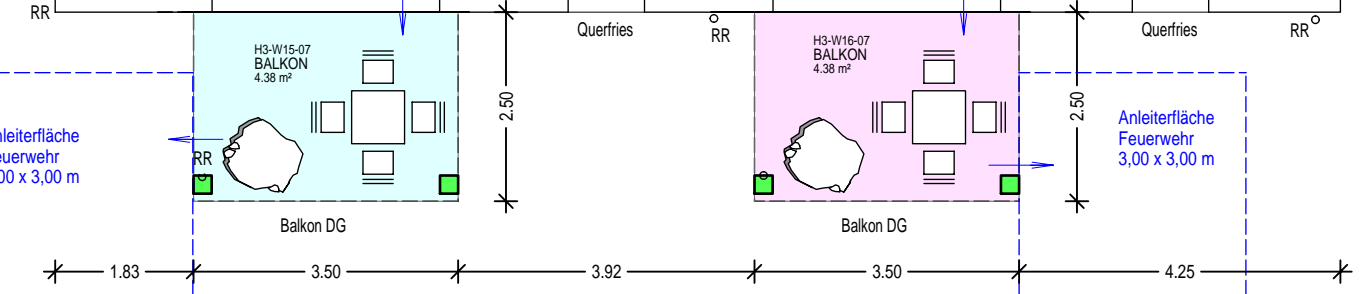
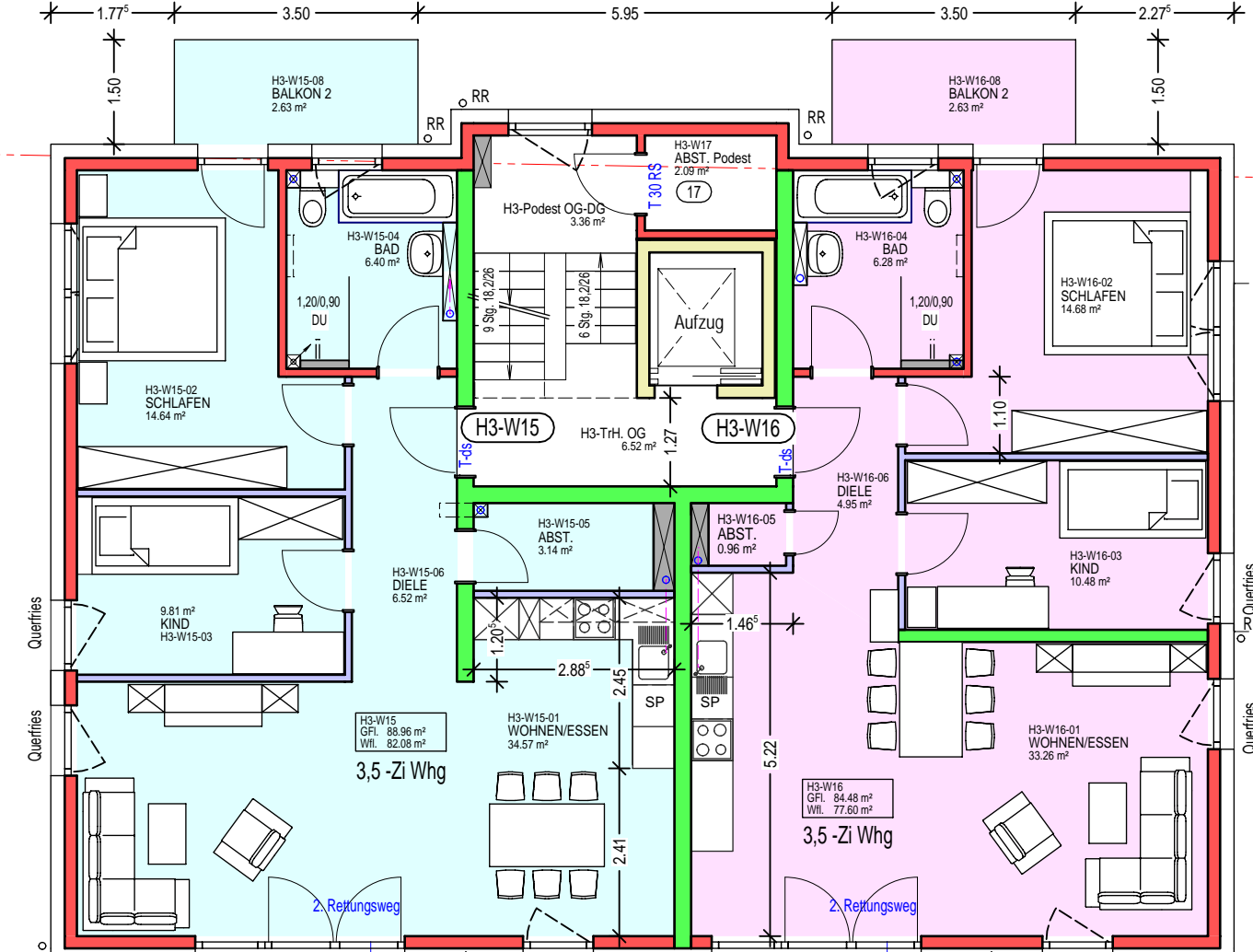
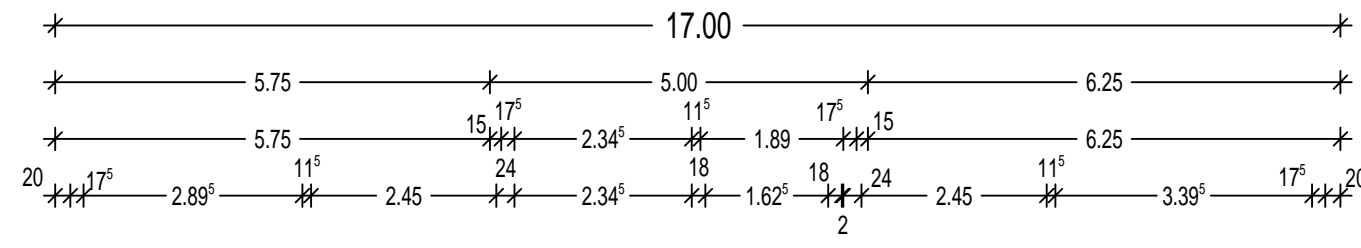
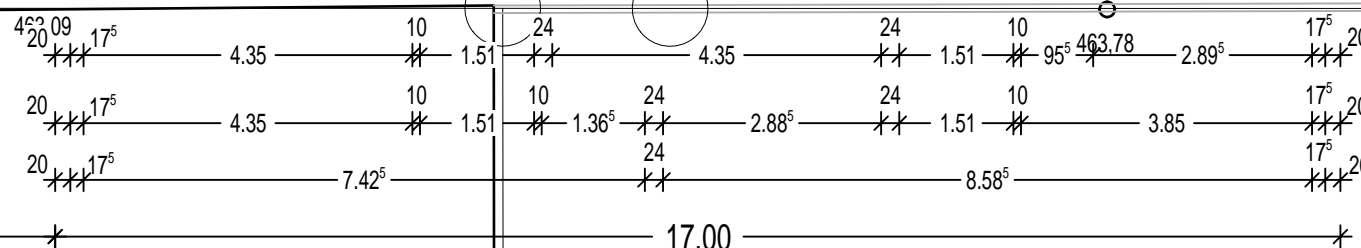
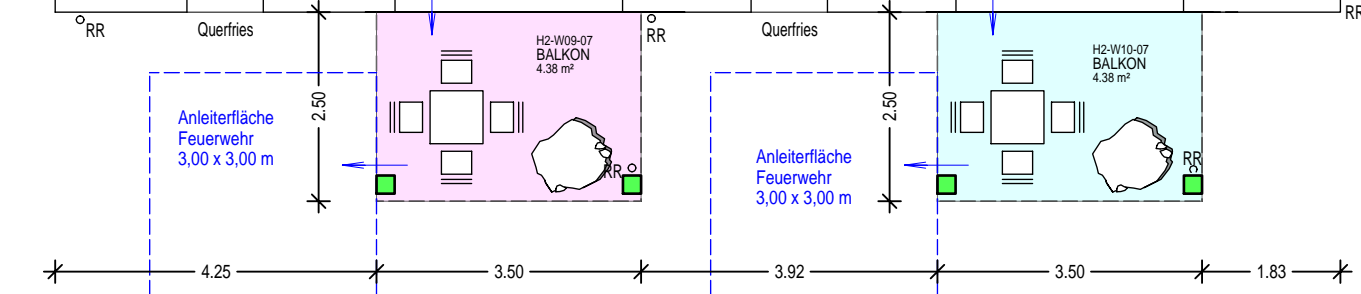
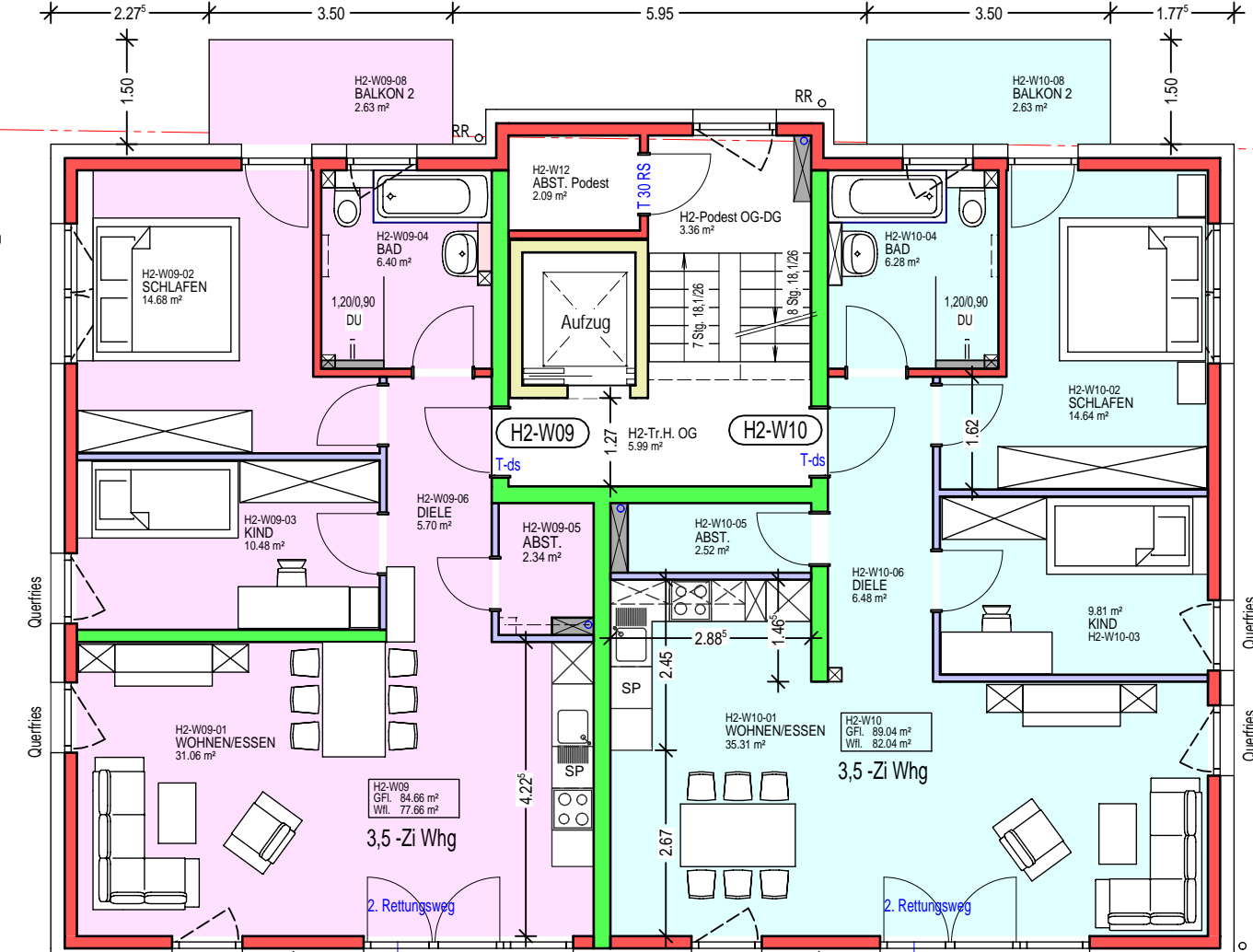
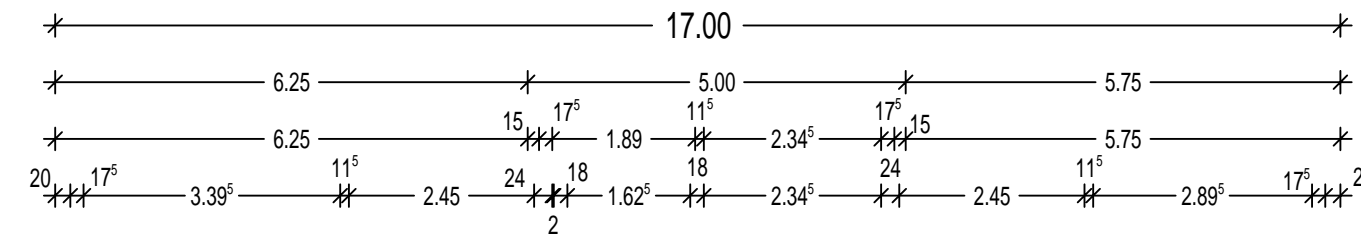
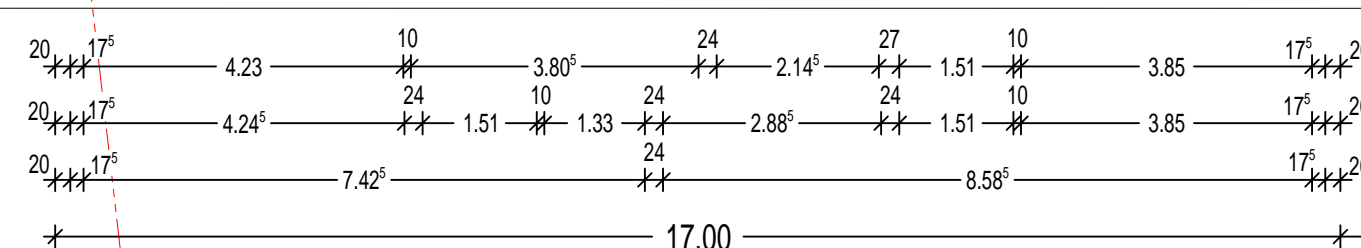
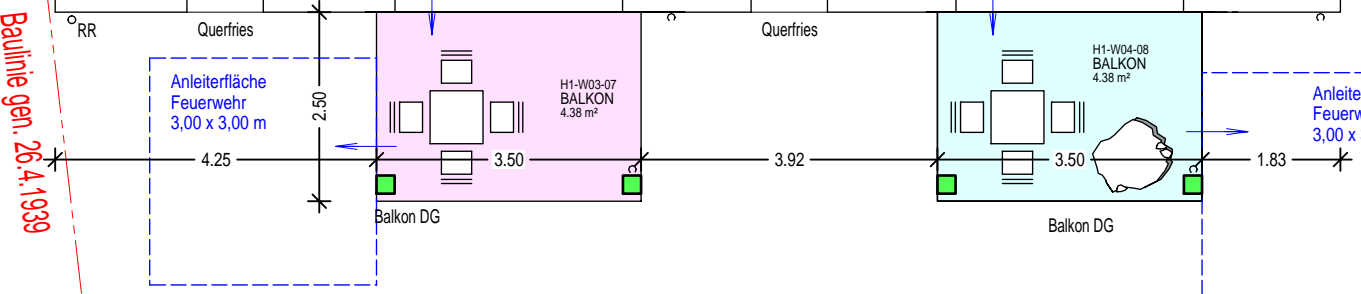
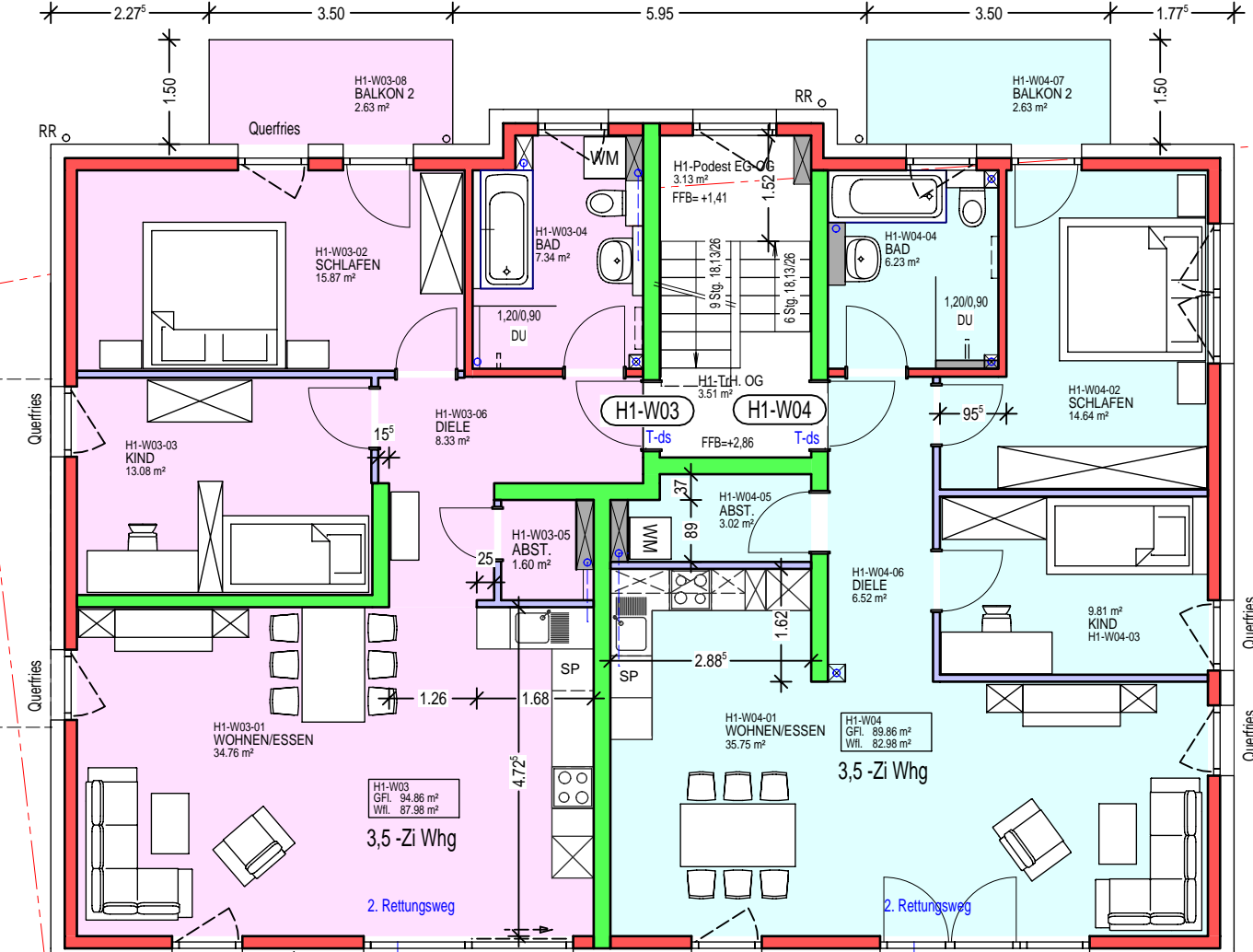
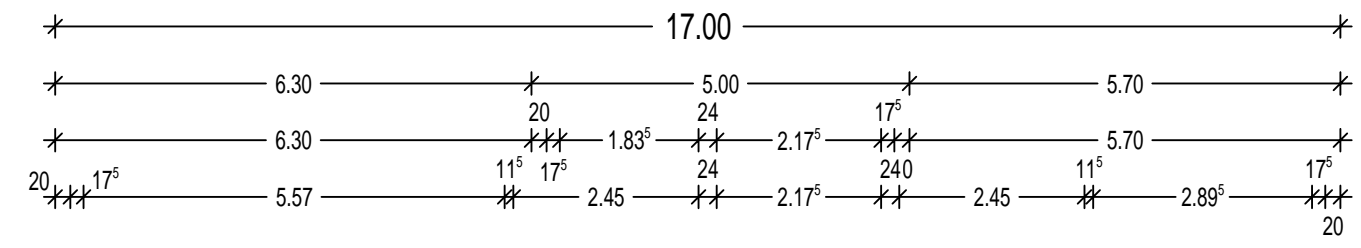


Kabelschrank


Stromkasten

Kilbergweg



Baulinie gen. 22.9.1959

OBERGESCHOSS

BAUGESUCH / DECKBLATT		Maßstab: 1:100
BAUVORHABEN : Erstellung von 3 MFH (17 WE + 1 GE) mit Garagen im UG sowie Stellplätze für Fahrräder und PKW Stehelinstraße, Flst.Nr. 4587/1 - 4587/3 72108 Rottenburg- Ergenzingen		
BAUHERR : BTM-Wohnbau GmbH Brandenburger Str. 3 72108 Rottenburg- Ergenzingen		Bauherr, den 11.09.2018
 Dipl.-Ing. (FH) B. Lohmiller Ingenieurbüro für Bauwesen Rottenburger Str. 19 72181 Starzach-Börsingen Tel.: 07457 / 91981 Fax.: 07457 / 91982		Planverfasser, den 11.09.2018 geändert, den 21.11.2018

H/B = 297 / 900 (0.27m²)

Allplan 2011